

WRIGLEYS
— SOLICITORS —

SOCIAL IMPACT INVESTMENT AND FINANCING





FOR OVER 25 YEARS, SOLICITORS FROM WRIGLEYS HAVE BEEN ADVISING SOCIAL IMPACT INVESTORS ON INVESTMENTS FOR SOCIAL PURPOSES.

We have contributed to the development of this important area through our involvement with studies for the European Commission on the regulation of social banks in Europe, the International Labour Organization on financing microenterprise, the publication for the Charities Aid Foundation of the book “Social Investment and other financing techniques for voluntary organisations” and the establishment of the CDFA and the UK Sustainable Investment and Finance Association.

We advise financial institutions and charities, social enterprises and employee owner companies of all shapes and sizes, seeking financing across a variety of sectors. From drafting and reviewing loan, intercreditor and security documentation, to advising on community share and bond offers, our breadth of expertise means that we can provide significant support in this field.

We act for a number of social impact investors, the social investment arms of charitable foundations, community development finance institutions, enterprise funds and credit unions, so we really understand the opportunities and challenges facing our clients and other organisations operating in the sector.



“Allia has been relying on the advice and expertise of Wrigleys for over 20 years. The team combines deep knowledge of their field with sensible practicality and commercial awareness, and I am glad to have them as both valued advisors and friends.”

Phil Caroe
Director Deal Execution
Allia

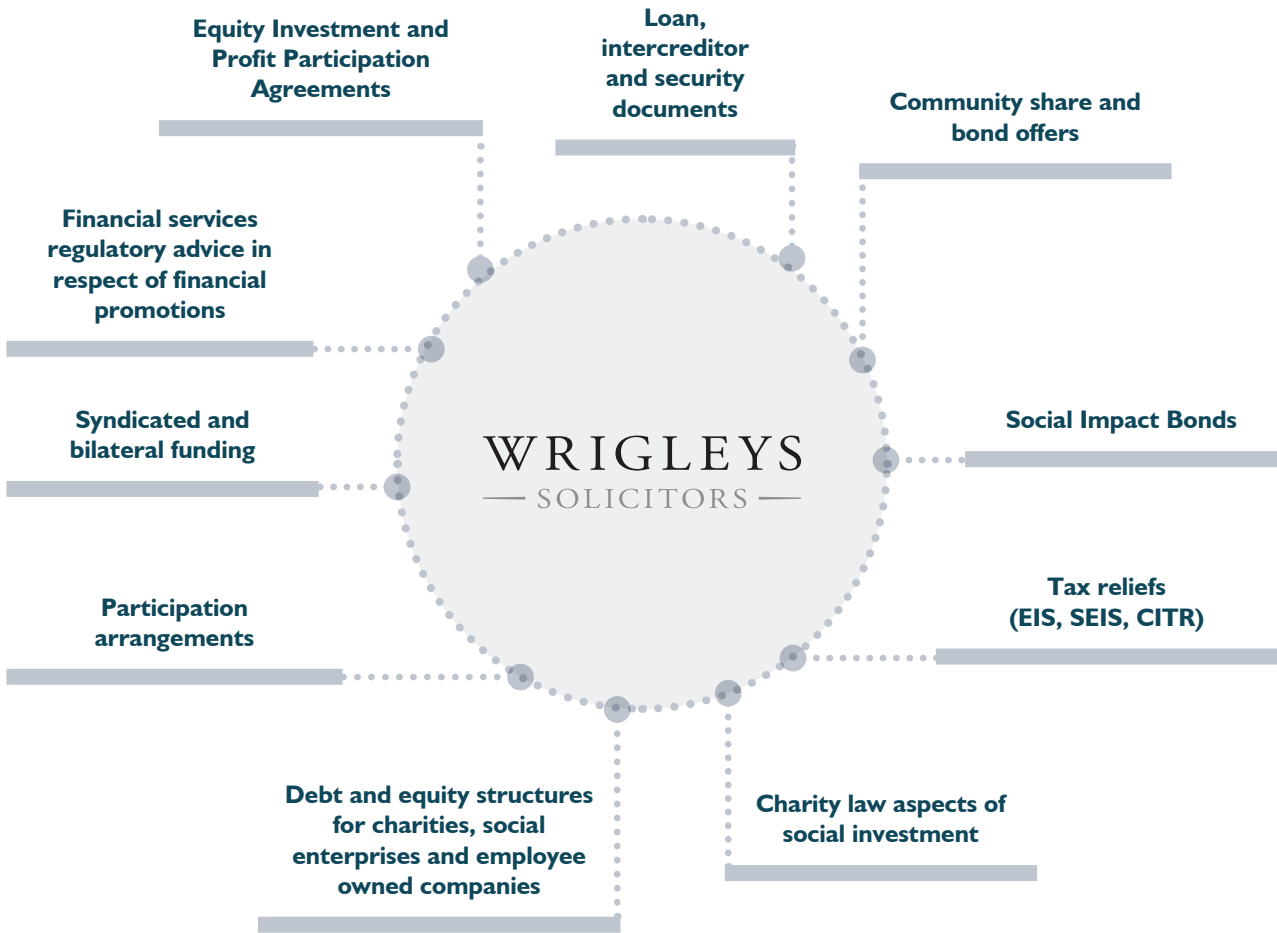


“The Wrigleys team provide excellent support. They are skilled finance lawyers who also understand the social impact we’re trying to create. They know the social investment sector and help us to build strong relationships with the organisations we invest in.”

Charlotte Benson
Co-Head of Legal
Big Society Capital

“Wrigleys’ advice has been clear and provided with an understanding of us as a charitable funder – rare and valuable characteristics in the fast moving field of society and impact investment.”

Danielle Walker Palmour
Director - Friends Provident Foundation



“Wrigleys are professional and knowledgeable in this most specialist of sectors.”

“Wrigleys has always provided valuable and timely legal advice and support to Fair4All Finance, whether it be commercial contracts or data protection. Thank you!”



Wrigleys are one of the few law firms in the country with dedicated lawyers working exclusively for charity and social economy clients. Our services and expertise include:

| | |
|--------------------------------------|---------------------------------------|
| CHARITIES ADMINISTRATION SERVICE | GOVERNANCE & STRUCTURES |
| CHARITY PROPERTY | OPERATIONS & CONTRACTS |
| CO-HOUSING AND COMMUNITY LAND TRUSTS | PUBLIC & THIRD SECTOR PENSIONS |
| COMMUNITY BUSINESS | RENEWABLE ENERGY |
| EMPLOYEE OWNERSHIP | SOCIAL ENTERPRISE |
| EMPLOYMENT & HR | CO-OPERATIVES |
| FINANCIAL SERVICES | COMMUNITY BENEFIT SOCIETIES & MUTUALS |

EXPERT ADVISERS TO CHARITIES AND THE SOCIAL ECONOMY

Every lawyer in the social impact investment and finance team combine three essential elements to deliver high quality and practical advice:

WRIGLEYS

— SOLICITORS —

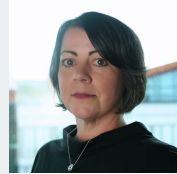
| | | |
|--|---|--|
| <p>SPECIALIST DISCIPLINE</p> <p>Whether in commercial law, corporate law or financial services, our team combines experience from national firms and industry experience.</p> | <p>CHARITY LAWYERS FIRST</p> <p>All team members are in the firm's Charity and Social Economy team and are members of the Charity Law Association.</p> | <p>EMPATHY</p> <p>All team members are themselves trustees, volunteers and/or directors giving them first hand practical experience of issues that they advise on</p> |
|--|---|--|



Malcolm Lynch
t: 0113 204 5724
e: malcolm.lynch@wrigleys.co.uk



Peter Parker
t: 0113 204 5792
e: peter.parker@wrigleys.co.uk



Sue Greaves
t: 0114 267 5625
e: sue.greaves@wrigleys.co.uk



Nick Dunn
t: 0113 204 1140
e: nick.dunn@wrigleys.co.uk

For further information please contact one of the team or scan QR code to visit the website:
wrigleys.co.uk

